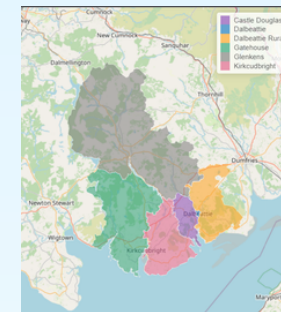


Stewartry Locality Profile

Locality encompassing zones of:
**Castle Douglas, Dalbeattie, Dalbeattie Rural, Gatehouse,
 Glenkens and Kirkcudbright**
 2021 Population estimate: **24,000**



- Castle Douglas
- Dalbeattie
- Dalbeattie Rural
- Gatehouse
- Glenkens
- Kirkcudbright
- Dumfries and Galloway

These indicators are a selection taken from a detailed profile of the Stewartry area.
 For more resources relating to this area visit www.dumgal.gov.uk/communityplanning

* +/- below indicates if statistically significant compared to Dumfries and Galloway

Access deprivation varies widely across the region (SIMD 2021)

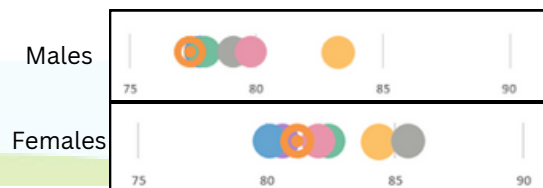


23%

Children in Gatehouse in low income families (2020/21)



Relatively high Life Expectancy across Stewartry (2017-2021)



54%

Primary 1 Children with healthy weight in Gatehouse *- (2019/20)



Low levels of unemployment across Stewartry (2021)



High levels of 16-19 year olds Participating in education, training or employment (2022)



57%

of Castle Douglas live near derelict sites (2021) *+



Image explainer

Each coloured dot allows for comparison across the different geographical areas within each indicator. Refer to top right hand corner key.

